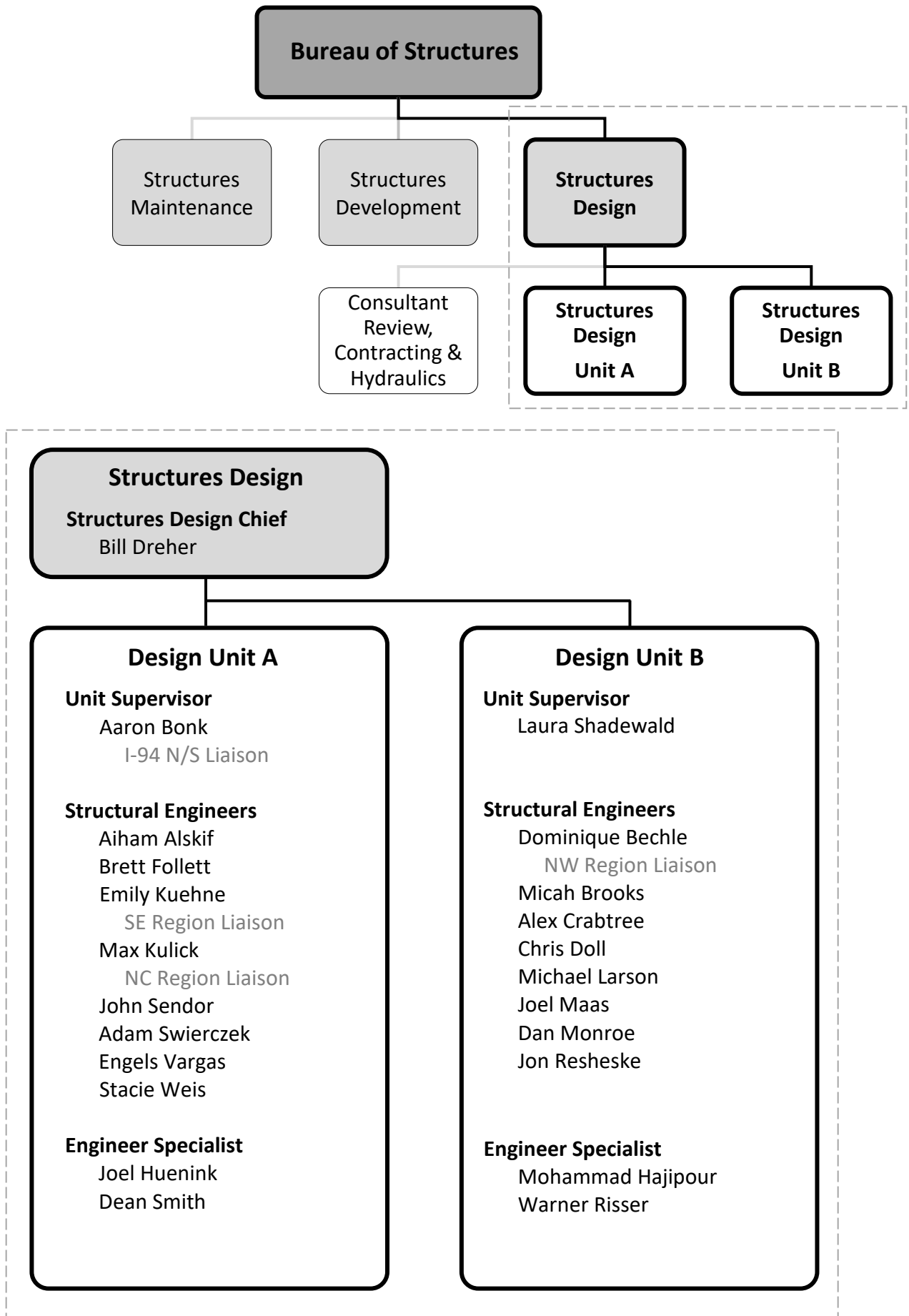
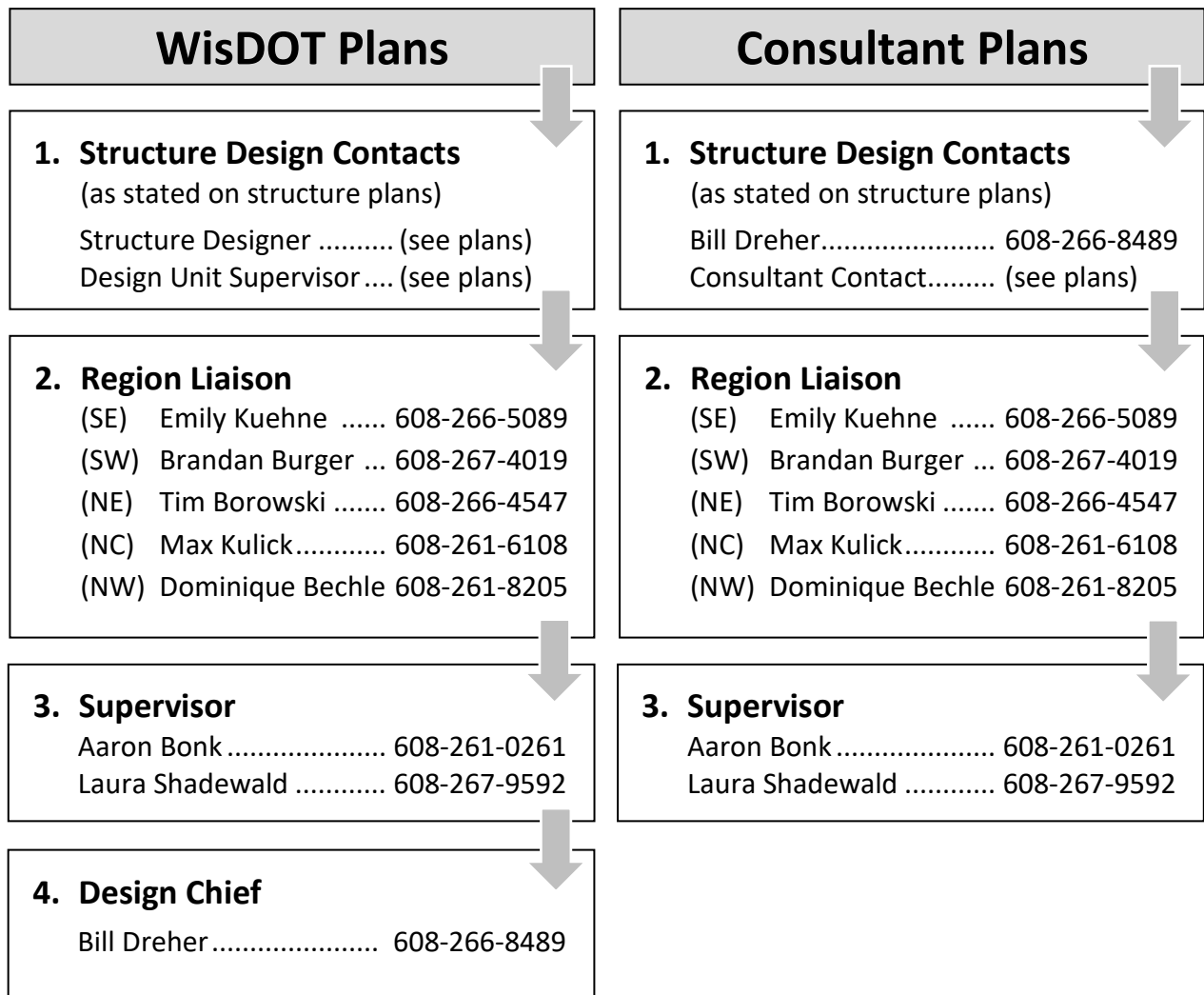


Structures Design Section Staff



Construction Questions



Fabrication Questions

Steel Structures, Railing, Expansion Joints, Sign Structures:

Carla Principe 608-261-6110 Carla.Principe@dot.wi.gov
Kristin Revello 608-266-5090 Kristin.Revello@dot.wi.gov

Bolting Questions:

Carla Principe 608-261-6110 Carla.Principe@dot.wi.gov
Steve Doocy 608-261-6063 Steve.Doocy@dot.wi.gov

Design/Build Retaining Walls, Noise Walls, Prefabricated Bridges & Box Culverts:

Brandan Burger 608-267-4019 Brandan.Burger@dot.wi.gov
Kristin Revello 608-266-5090 Kristin.Revello@dot.wi.gov

Highway Structure Information (HSI):

Pile Driving Records: DOTDTSDStructuresPiling@dot.wi.gov
 DOTDTSDGeotechnicalPiling@dot.wi.gov

As-Built Mailbox: DOTDTSDStructuresRecords@dot.wi.gov